

# VIVAX METROTECH

## vLoc3-9800 UTILITY LOCATOR

- Fully-automatic gain control
- Optional receiver-to-transmitter link
- Compass indicator
- Distance Sensitive Left / Right Guidance™
- Internal data logging
- Optional Bluetooth connectivity
- Optional plug-in EMS locator

The **vLoc3-9800 utility locator** introduces new innovative tools for locating buried utilities assuring damage prevention while gathering information for analysis.

The highly user configurable vLoc3-9800 contains two passive locate modes, and a range of configurable frequencies from 16Hz to 200 kHz. Audio and mechanical vibration alerts can also be configured by the user providing warnings for shallow depth, overload, overhead cables, and excessive swinging. Plug-and-play options for the receiver include optional Bluetooth module useable with external GPS devices and MLA (marker locator adapter) add-on to locate buried markers. Depth of cover and current on the line are shown with the push of a button. With the optional A-Frame the user can pinpoint cable faults with directional arrows.

The vLoc3-9800 provides versatility with low frequencies for the telecom, power, and CATV industries as well as higher frequencies for the gas, water and sewer industries.

Weatherproof speaker

Rechargeable Li-ion battery or six x AA Alkaline

USB Data Port

Accessory and charging socket

Optional radio link to receiver and transmitter

Patented Distance Sensitive™  
Left/Right Antenna Array

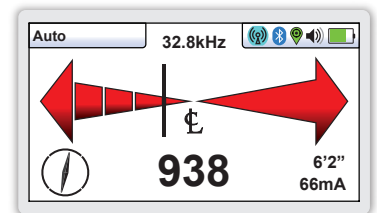
Optional plug-in MLA marker locator



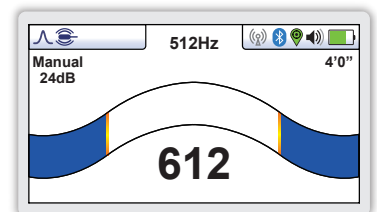
High visibility 4.3"/10cm LCD

Optional Bluetooth module

High impact ABS  
injected molded housings



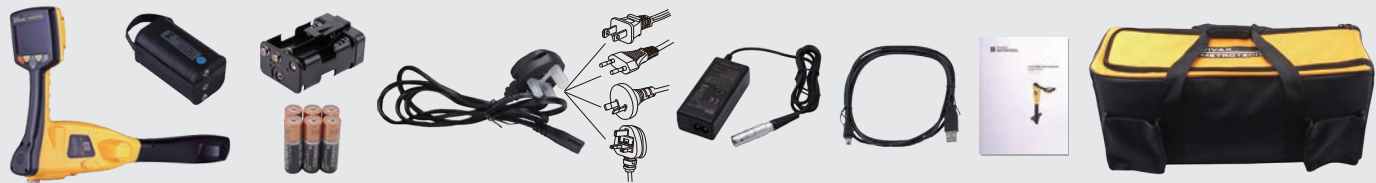
**Line locate mode** - shows left/right indication with continuous depth and current



**Sonde locate mode** - shows peak locate sonde position with continuous depth reading

vLoc3-9800 Receiver Specifications	
<b>Construction</b>	High impact ABS injection molded housing
<b>Weight &amp; Dimensions</b>	4.4lbs (2kg) / 12.6in(L) x 8.6in(W) x 26.6in(H) (321mm x 219mm x 676mm)
<b>Display</b>	Transmissive 480 x 272 Pixel, 16-bit Color, High Visibility LCD, 4.3"
<b>Battery options</b>	Rechargeable custom Lithium-ion batteries with 100-240V AC mains charger Six AA Alkaline batteries
<b>Battery life</b>	Lithium-ion – typically 27-hours intermittent use at 70°F (21°C) Alkaline – typically 12 hours intermittent use at 70°F (21°C)
<b>Operating frequencies</b>	Configurable frequencies from 16Hz to 200 kHz Power - 50Hz and 60Hz Radio - 10kHz - 22.7kHz bandwidth
<b>Operating modes</b>	Classic Locate left/right indication and Sonde Locate
<b>Data logging and transfer</b>	50 Million records - Records include depth, current, frequency, mode, gain setting, signal strength, GPS coordinate, date and time (if Bluetooth active) Download data from the receiver using the free MyLocator3 desktop app, save as xlx, txt, shp and kml files
<b>Environmental</b>	IP65 and NEMA 4

## What's in the box



## Popular Accessories



A-Frame Fault Locator



Vehicle Charging Lead



Sondes



Remote Antenna



Bluetooth Module

## Compatible Transmitters

### 1- Watt Transmitters



Loc-1Tx



VM-550FF / VM-560FF

### 5-Watt Transmitter



Loc-5DTx



Loc3-5STx

### 10-Watt Transmitter



Loc3-10Tx

Local Vivax-Metrotech Distributor:

### Vivax-Metrotech Corporation

3251 Olcott Street, Santa Clara, CA 95054, USA

**T/Free: 800-446-3392**

**Tel: +1-408-734-1400**

www.vivax-metrotech.com



V1.0